

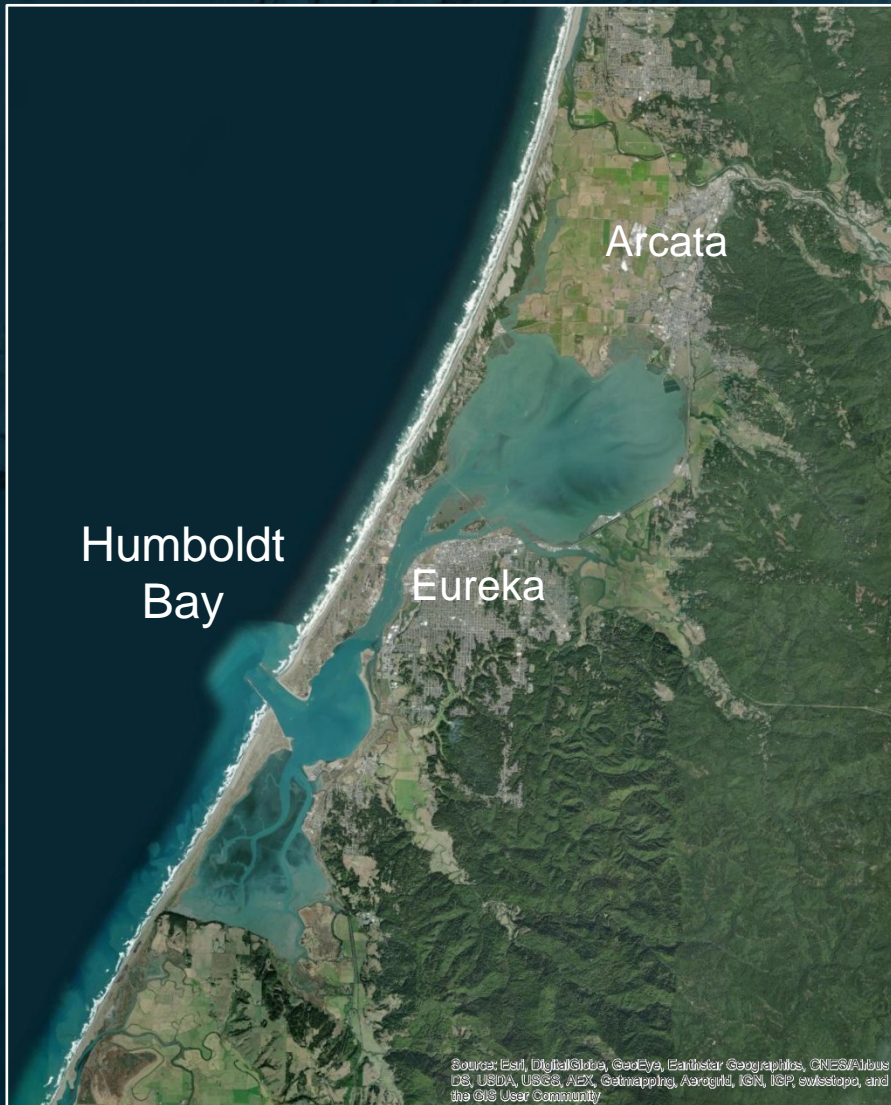


## Smart Coast California June 14, 2023

Hank Seemann  
Public Works Deputy-Director

Successes and challenges with  
sea level rise adaptation planning  
along a Humboldt Bay transportation corridor

















View of transportation corridor around Humboldt Bay between Eureka and Arcata





View of transportation corridor around Humboldt Bay between Eureka and Arcata





View of transportation corridor around Humboldt Bay between Eureka and Arcata





Existing

To be constructed  
2023-2024



## Eureka-Arcata Transportation Corridor: December 31, 2005



Storm damage along the Eureka-Arcata transportation corridor

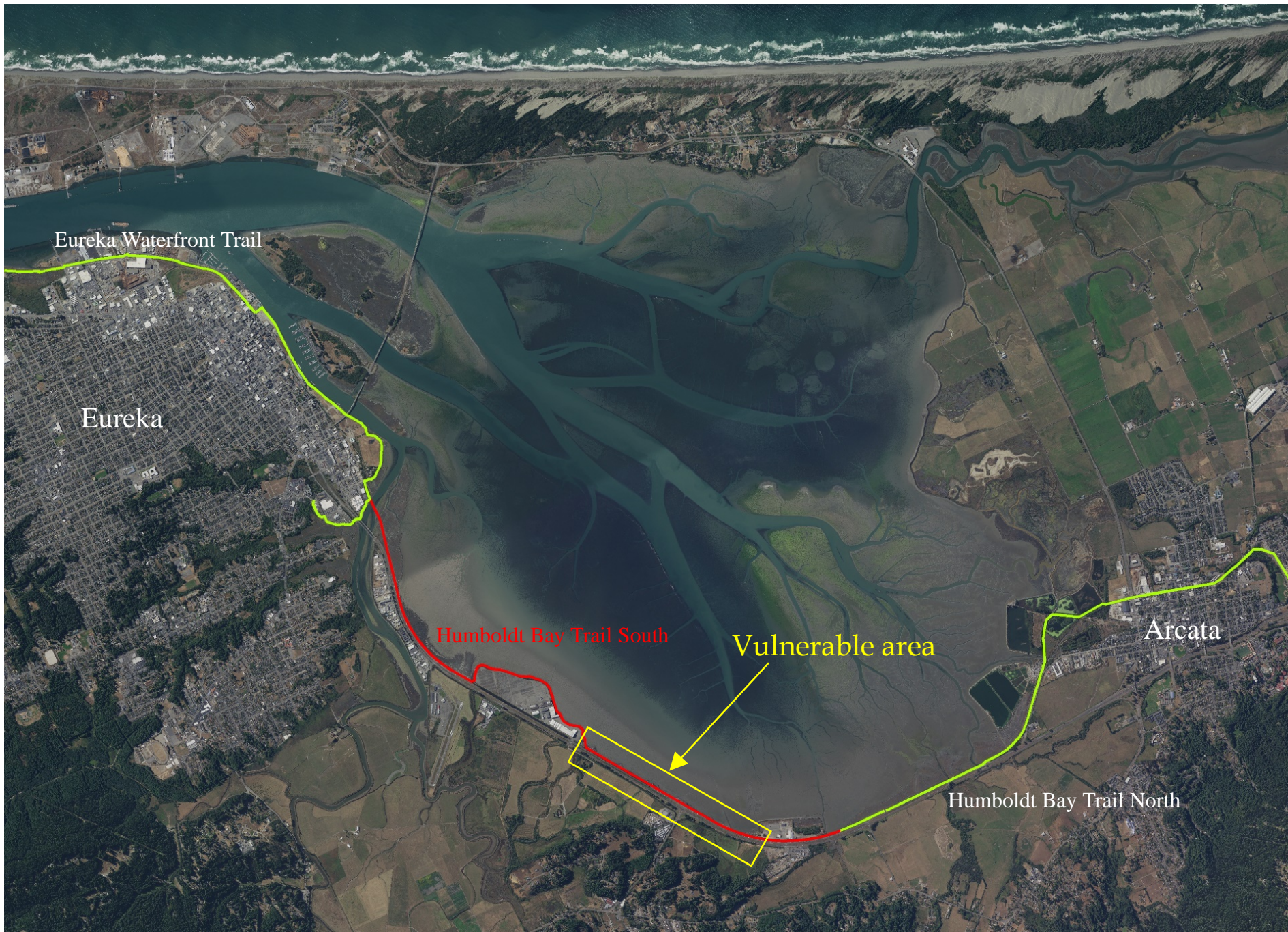




Existing

To be constructed  
2023-2024





Existing

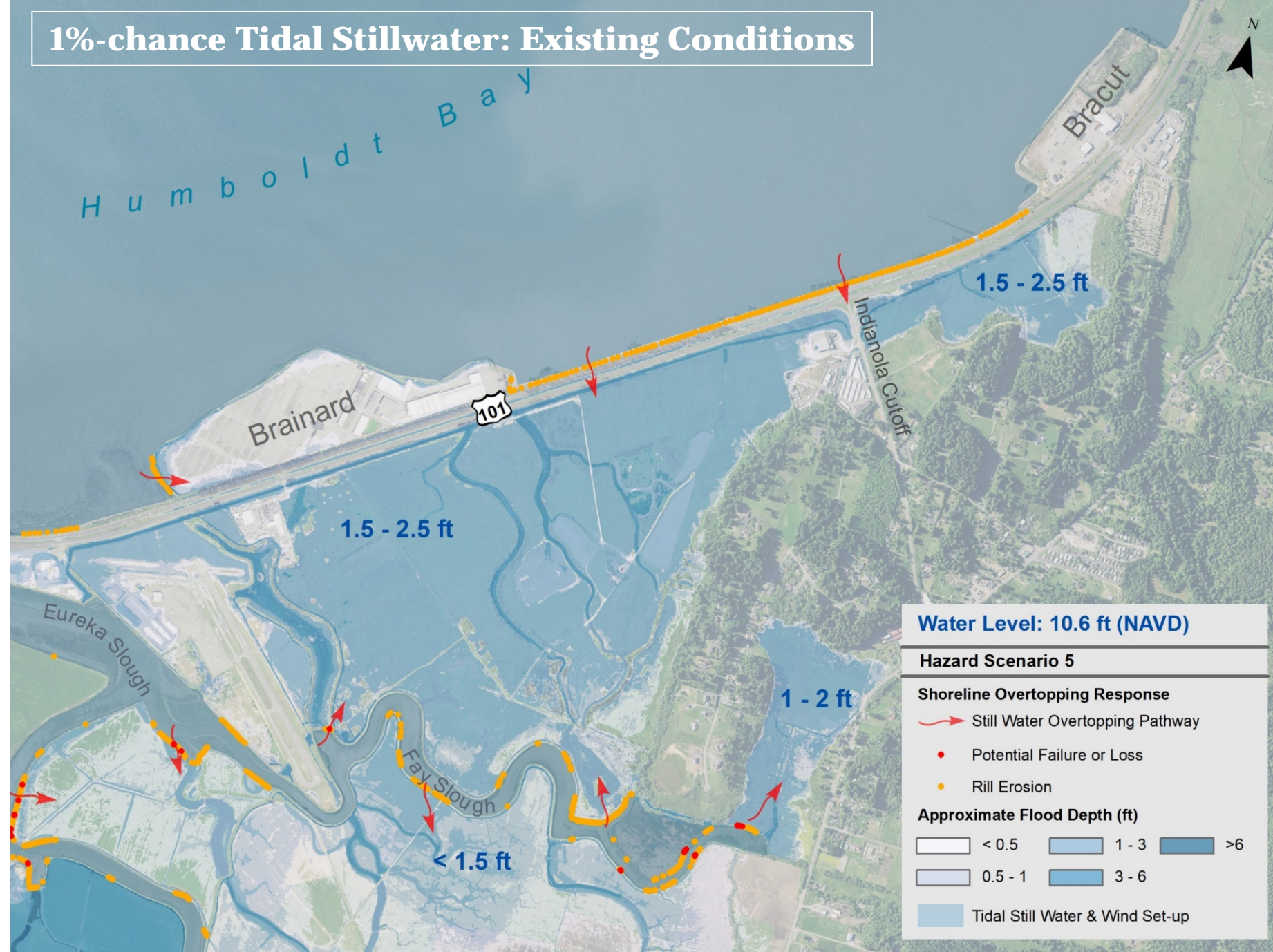
To be constructed  
2023-2024

### Humboldt Bay Trail South

- 4.25 miles of bikepath
- 1.0 mile shoreline repairs, remove rails/ties, raise railroad embankment 1-2 feet in vulnerable area
- 3 new bridges
- Major rehabilitation to 750-foot-long railroad bridge
- Remove section of large Eucalyptus trees
- Construction \$16 million
- Pre-construction \$4 million
- Regional wetland mitigation



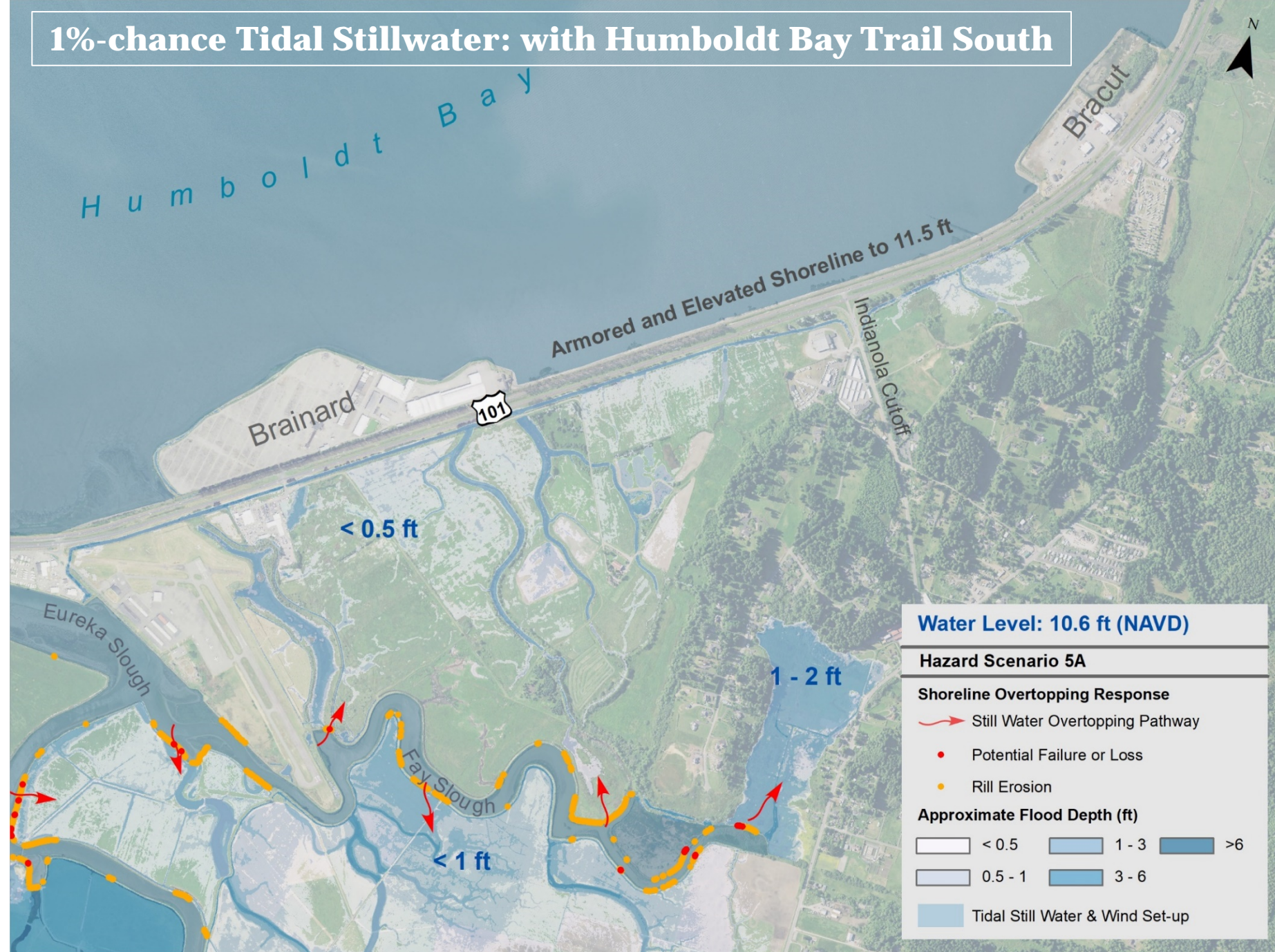
# 1%-chance Tidal Stillwater: Existing Conditions



Flooding simulation for existing conditions



# 1%-chance Tidal Stillwater: with Humboldt Bay Trail South



Flooding simulation after Humboldt Bay Trail South is constructed





Erosion protection benefits of salt marsh





Erosion protection benefits of salt marsh





Existing Conditions



Concept for Adaptation Project

- Initial feasibility study complete (\$250k from NFWF/OPC)
- Advanced feasibility study and environmental study starting (\$750k from State Coastal Conservancy)



# Closing Points

- SLR planning is evolving rapidly
- Think phased approach rather than “final plan”
- Integrate SLR adaptation with infrastructure and community development projects
- Look for opportunities to utilize nature-based solutions for multi-benefit projects
- Need for creativity and innovation, continuous improvement and learning



<https://humboldtgov.org/2487/Sea-Level-Rise>